

# 微动开关

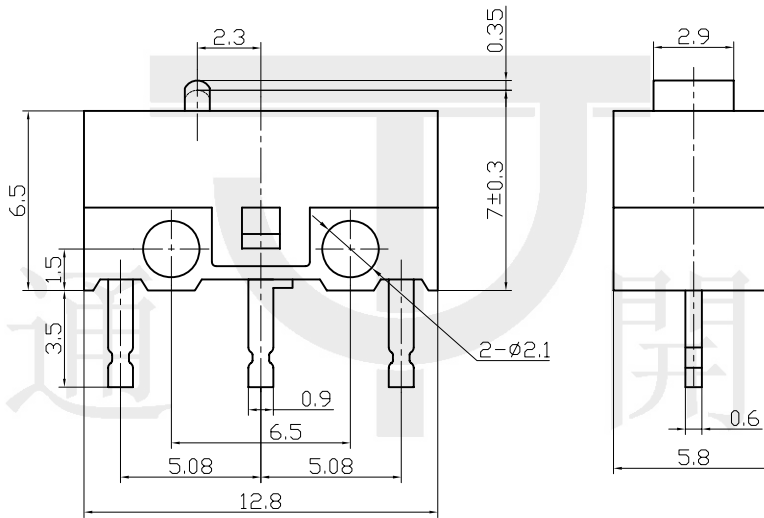
## Micro Switches

型号(TYPE): MSW-21

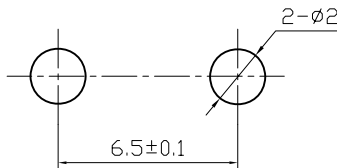
### 技术特性 (Specification)

- 规格 (Rating): 1A 125/250V AC
- 接触电阻 (Contact R):  $30\text{m}\Omega$  max
- 绝缘电阻 (Insulation R): 250V DC  $100\text{M}\Omega$  min
- 耐电压 (Dielectric Strength): 1 Minute 1000V AC
- 环境温度 (Ambient Temperature):  $-25^{\circ}\text{C} \sim +65^{\circ}\text{C}$
- 电气寿命 (Electrical Life): 30,000 Cycles

### 外型图 (Outline Drawing)



### 安装尺寸 (Mounting)



### 电路图 (Circuitry)

